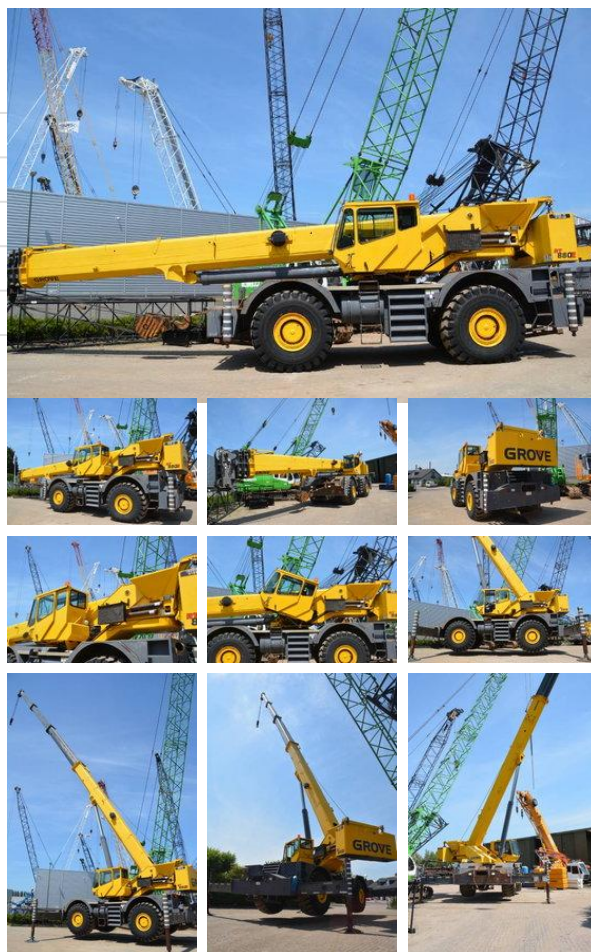


## Grove RT 880 E

### Caractéristiques générales

Marque	Grove
Sous-catégorie	Terrain accidenté
Année de construction	2009
Heures de fonctionnement	12300
Condition	Utilisé
État général	Très bien
Marquage CE	Et



### Propriétés

Poids unique	49.588kg
Capacité de levage maximale	75.000kg

### Description

= Additional options and accessories = - Hook blocks = Remarks = General \* Brand: Grove \* Model: RT880E \* Type: Rough Terrain Crane \* Year: 2009 \* Hours: 12,300 h \* CE certified Capacity \* Max. lifting capacity: 75 ton Boom \* 4-section full power telescopic boom \* Boom length: 12.6 - 39.0 m \* Max. tip height: 41.9 m Engine \* Make: Cummins \* Type: 6-cylinder turbo diesel engine \* Power: 205 kW (Tier III) Drive \* 4 x 4 x 4 drive and steering \* Crab steer / coordinated steer \* Max. travel speed: 35 km/h Tyres \* 80% Bridgestone tyres Hydraulics \* Hydraulic tilting cabin (20°) \* Hydraulic outriggers \* Hydraulic removal/install of counterweight Safety \* PAT Krueger lifting computer \* Load Moment Indicator (LMI) \* Anti-two block system \* Work Area Definition System Cab \* Full vision operator cab \* Hydraulic tilt cabin \* Air conditioning Weight \* Operating weight approx. 49.6 ton \* Counterweight: 8.2 ton Condition \* Crane is in very good condition \* Available from stock 75 ton rough terrain crane - 39 m telescopic boom - 4x4x4 - hydraulic tilt cab - CE certified - available from stock Dekker BV, Netherlands = More information = Type: Rough terrain crane Make of engine: Cummins Number of owners: 1 EPA Marked: yes Front tyres / undercarriage remaining: 80 Rear tyres remaining : 80 Delivery terms: EXW Production country: US Min boom length: 1260 cm