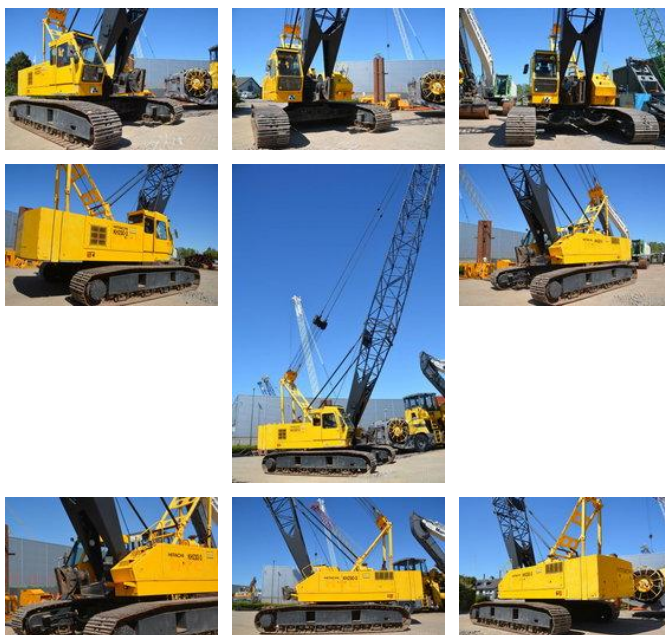




## Hitachi KH 230-3

### Caractéristiques générales

Marque	Hitachi
Sous-catégorie	Grue sur chenilles
Année de construction	1998
Heures de fonctionnement	9858
Condition	Utilisé
Conditions générales	Excellente
ceMarking	Oui



### Caractéristiques

Capacité de levage

62.000kg

# Hitachi KH 230-3

## Spécifications techniques

Transmission

tracking

## Description

= Additional options and accessories = - Hook blocks = Remarks = Hitachi KH230-3 Year: 1998 Hours: 9858 ORIGINAL HOURS 43 meter boom Fairlead for dragline use (never used) Lifting computer Winches with free-fall option Hino EM100 engine All manuals and even the original toolbox included Undercariage 70% good, tractor type First owner low hour machine in immaculate condition. CE Price: Euro 89.000,- = More information = Make of engine: Hino Number of owners: 1 Delivery terms: EXW Production country: JP Min boom length: 1300 cm

## Accessoires