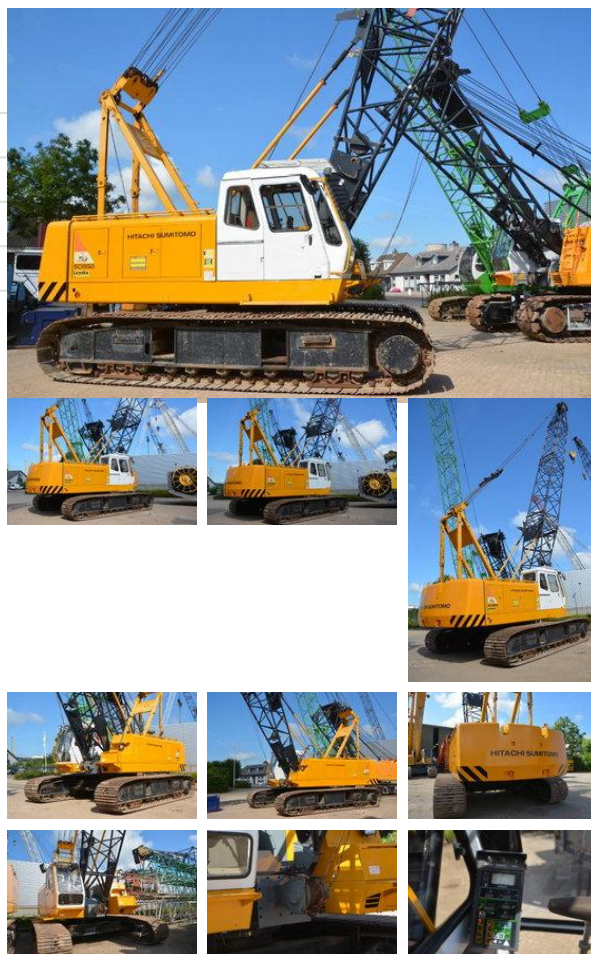


Hitachi-Sumitomo SCX 550

Caractéristiques générales

Marque	Hitachi-Sumitomo
Sous-catégorie	Grue sur chenilles
Année de construction	2006
Heures de fonctionnement	20000
Couleur	Jaune
Condition	Utilisé



Propriétés

Capacité de levage maximale	50.000kg
Hauteur de levage	3.600cm
Type de mât	mastType.lattice

Spécifications techniques

Conduire	tracking
----------	----------

Description

= Additional options and accessories = - Hook blocks = Remarks = General * Brand: Hitachi Sumitomo * Model: SCX550 * Type: Hydraulic crawler crane / lattice boom crane * Year: 2006 * Hours: 20,000 h * CE certified Capacity * Max. lifting capacity: 55 ton Boom * Lattice boom configuration * Main boom length: 37 m Engine * Make: Hino * Model: H07CT Winches * Dual winches with free-fall option Safety * Hitachi lifting computer Cab * Air conditioning Included * Hook block * Jib ball Remarks * Reliable and versatile crawler crane * Suitable for construction, infrastructure and general lifting applications * Well-maintained machine * Available from stock 55 ton crawler crane - 37 m lattice boom - free-fall winches - CE certified - available from stock Dekker BV, Netherlands = More information = Make of engine: Hino Delivery terms: EXW Production country: JP Min boom length: 1000 cm