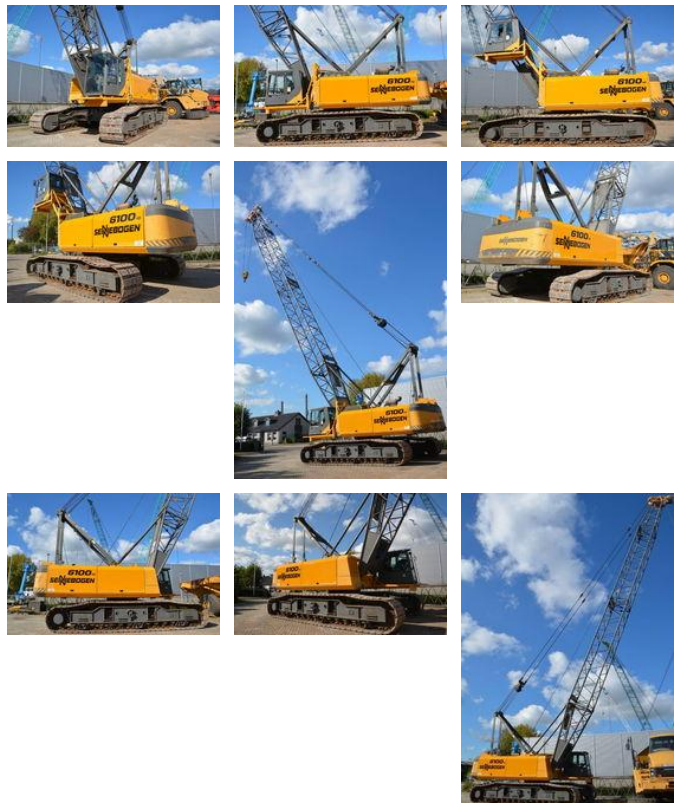




Sennebogen 6100 HD

Caractéristiques générales

Marque	Sennebogen
Sous-catégorie	Grue sur chenilles
Année de construction	1997
Condition	Utilisé



Caractéristiques

Capacité de levage

100.000kg

Mast type

mastType.lattice

Sennebogen 6100 HD

Spécifications techniques

Transmission

tracking

Description

= Additional options and accessories = - Hook blocks = Remarks = Sennebogen 6100HD Year: 1997 Hours: 33000 40 meter boom
Hookblock CE From first Dutch customer Caterpillar 3306 engine Undercarriage 80% good = More information = Colour: Original
Make of engine: Caterpillar Delivery terms: EXW Production country: DE

Accessoires