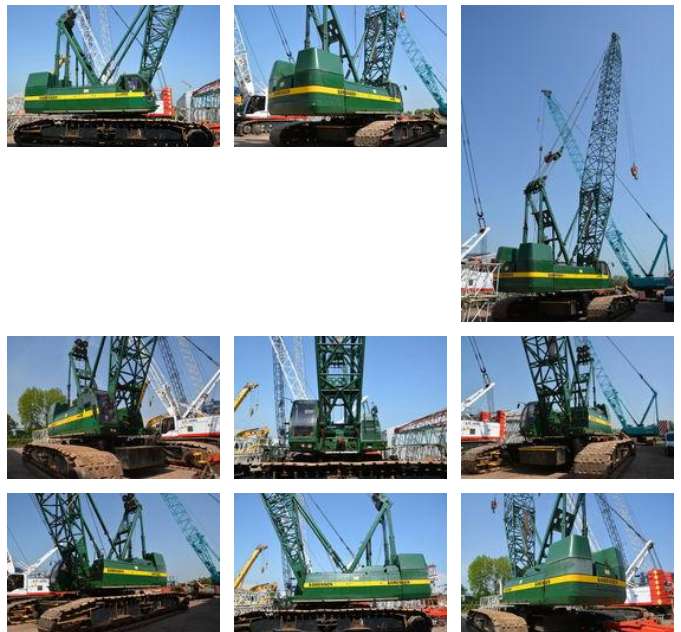
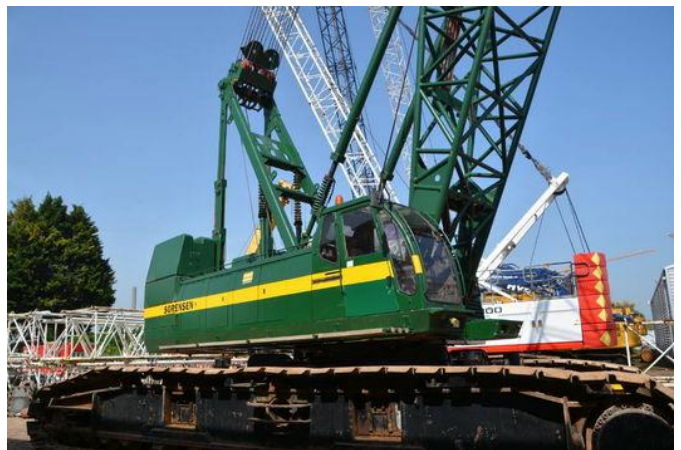




Sumitomo SC1500-2

Caractéristiques générales

Marque	Sumitomo
Sous-catégorie	Grue sur chenilles
Année de construction	1996
Heures de fonctionnement	9668
Couleur	Vert
Condition	Utilisé
Conditions générales	Excellente



Caractéristiques

Capacité de levage	180.000kg
Mast type	mastType.lattice

Sumitomo SC1500-2

Spécifications techniques

Transmission

tracking

Description

= Additional options and accessories = - Hook blocks = Remarks = Sumitomo SC1500-2 Year: 1996 Hours: 9668 New lifting computer 64 meter boom + aux sheave 30 meter fly jib Live mast 30 ton extra counterweight, upgraded to 180 ton 3 hookblocks , 150ton, 70 tons and 6 tons jibball Free-fall winches Rated line pull : 13.5 ton (28mm cables) Fair lead = More information = Delivery terms: EXW Production country: JP

Accessoires