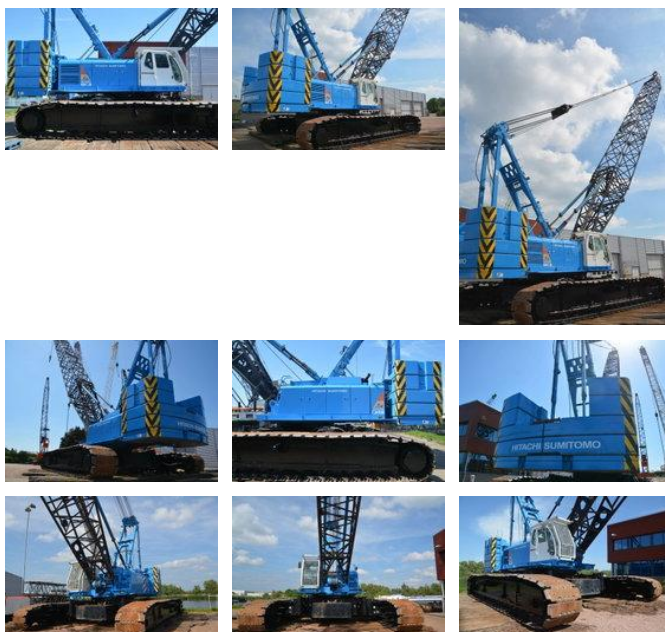




Hitachi-Sumitomo SCX 2500

Algemene kenmerken

Merk	Hitachi-Sumitomo
Subcategorie	Telescooprupekraan
Bouwjaar	2005
Bedrijfsuren	20000
Conditie	Gebruikt
CE markering	Ja



Eigenschappen

Hefhoogte	8.800cm
Mast type	Telescopisch

Hitachi-Sumitomo SCX 2500

Technische specificaties

Aandrijving

tracking

Omschrijving

= Aanvullende opties en accessoires = - Hijshaken = Bijzonderheden = General • Brand: Hitachi Sumitomo • Model: SCX2500 • Type: Hydraulic crawler crane / lattice boom crane • Year: 2005 • Hours: 20,000 h Capacity • Max. lifting capacity: 250 ton Boom • Lattice boom crane configuration • Main boom length: 88 m Engine • Make: Mitsubishi • Model: 6D24-TL • Power: 235 kW (320 hp) Weight • Operating weight: approx. 203 ton • Counterweight: 86.3 ton Winches • Dual main winches with free fall option • Max. line pull: 245 kN (25 ton) each • Hydraulic tag line Hydraulics • Multi-pump hydraulic system • 3 variable displacement pumps + gear pump Undercarriage • Crawler undercarriage • Track shoe width: 1,120 mm • Travel speed: 0.8 – 1.2 km/h Safety • Load Moment Limiter (SML-10) • Overload protection system • Boom & hook limiting devices Cab • Full vision operator cab • Cab guard / FOPS (falling object protection) installed Crawler crane 250 ton – lattice boom – heavy lifting crane – available from stock Dekker BV, Netherlands = Meer informatie = Merk motor: Mitsubishi Leveringsvoorwaarden: EXW Productieland: JP

Accessoires