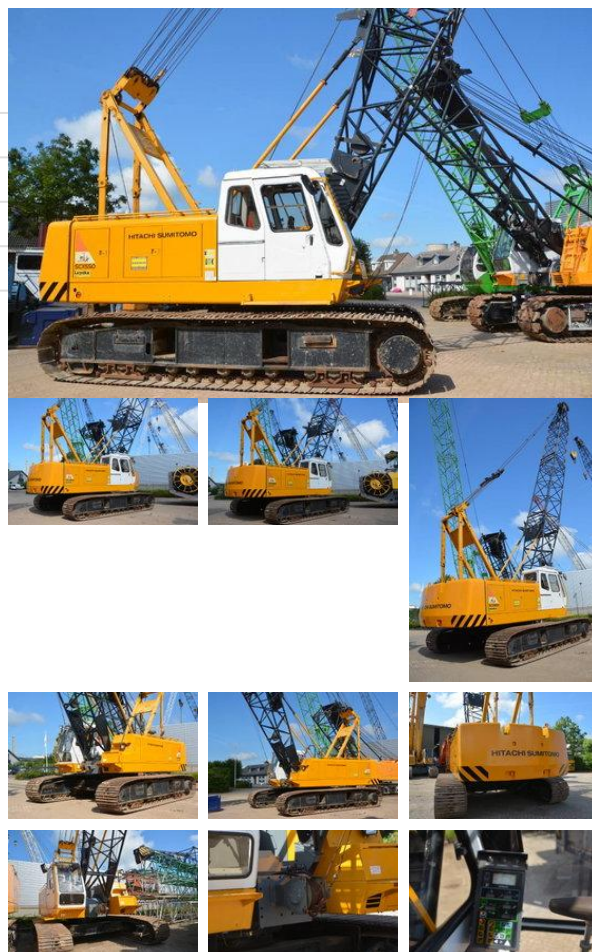


## Hitachi-Sumitomo SCX 550

### Algemene kenmerken

Merk	Hitachi-Sumitomo
Subcategorie	Rupshijskraan
Bouwjaar	2006
Bedrijfsuren	20000
Kleur	Geel
Conditie	Gebruikt



### Eigenschappen

Max. hefcapaciteit	50.000kg
Hefhoogte	3.600cm
Mast type	mastType.lattice

### Technische specificaties

Aandrijving	tracking
-------------	----------

### Omschrijving

= Aanvullende opties en accessoires = - Hijshaken = Bijzonderheden = General \* Brand: Hitachi Sumitomo \* Model: SCX550 \* Type: Hydraulic crawler crane / lattice boom crane \* Year: 2006 \* Hours: 20,000 h \* CE certified Capacity \* Max. lifting capacity: 55 ton Boom \* Lattice boom configuration \* Main boom length: 37 m Engine \* Make: Hino \* Model: H07CT Winches \* Dual winches with free-fall option Safety \* Hitachi lifting computer Cab \* Air conditioning Included \* Hook block \* Jib ball Remarks \* Reliable and versatile crawler crane \* Suitable for construction, infrastructure and general lifting applications \* Well-maintained machine \* Available from stock 55 ton crawler crane – 37 m lattice boom – free-fall winches – CE certified – available from stock Dekker BV, Netherlands = Meer informatie = Merk motor: Hino Leveringsvoorwaarden: EXW Productieland: JP Min gieklength: 1000 cm