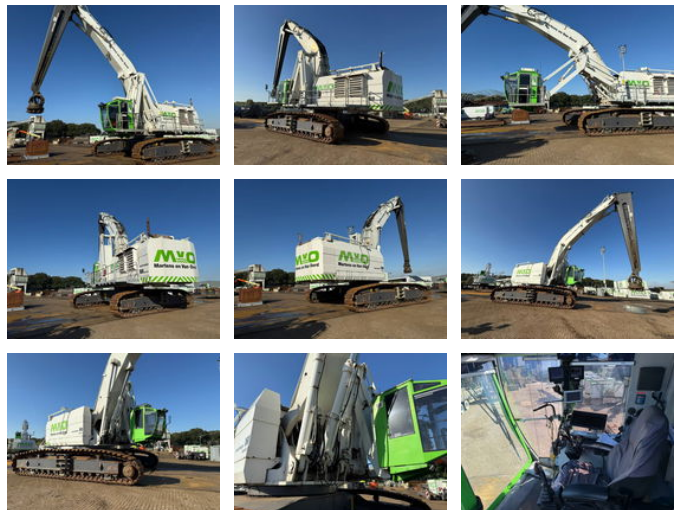




## Diversen Mantsinen 160 R

### General features

Brand	Diversen
Subcategory	Crawler excavator
Construction year	2012
Operating hours	17661
Color	White
Condition	Used
General condition	Very good
Fuel	Diesel
CE marking	Yes



### Characteristics

Empty weight 157.000kg

# Diversen Mantsinen 160 R

## Technical specifications

Drive	tracking
Engine output	710hp

## Description

= Additional options and accessories = - Additional hydraulics - Auto / hydraulic quick coupler - Auto lubrication system = Remarks  
= Mantsinen 160R 160 tons Excavator/ long reach Year: december 2012 Hours : 17661 Caterpillar C18 522KW had recent  
overhaul Including 2 dippersticks ; 1 X dipperstick with bucket attachment & 1 X for re-handling. CE Max reach ; 16.9 ton on 20  
meter , on 10.6 meter 35 ton = More information = Make of engine: caterpillar Delivery terms: EXW Production country: FI

## Accessories

- Air conditioning