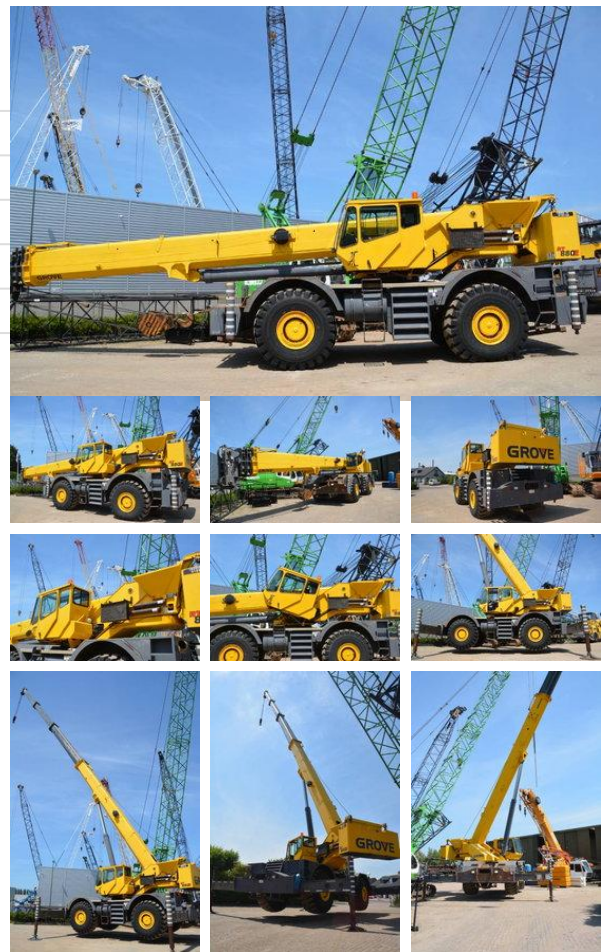


Grove RT 880 E

General characteristics

Brand	Grove
Subcategory	Rough terrain
Year of construction	2009
Operating hours	12300
Condition	Used
General state	Very good
CE marking	And



Properties

Single weight	49.588kg
Max. lifting capacity	75.000kg

Description

= Additional options and accessories = - Hook blocks = Remarks = General * Brand: Grove * Model: RT880E * Type: Rough Terrain Crane * Year: 2009 * Hours: 12,300 h * CE certified Capacity * Max. lifting capacity: 75 ton Boom * 4-section full power telescopic boom * Boom length: 12.6 - 39.0 m * Max. tip height: 41.9 m Engine * Make: Cummins * Type: 6-cylinder turbo diesel engine * Power: 205 kW (Tier III) Drive * 4 x 4 x 4 drive and steering * Crab steer / coordinated steer * Max. travel speed: 35 km/h Tyres * 80% Bridgestone tyres Hydraulics * Hydraulic tilting cabin (20°) * Hydraulic outriggers * Hydraulic removal/install of counterweight Safety * PAT Krueger lifting computer * Load Moment Indicator (LMI) * Anti-two block system * Work Area Definition System Cab * Full vision operator cab * Hydraulic tilt cabin * Air conditioning Weight * Operating weight approx. 49.6 ton * Counterweight: 8.2 ton Condition * Crane is in very good condition * Available from stock 75 ton rough terrain crane – 39 m telescopic boom – 4x4x4 – hydraulic tilt cab – CE certified – available from stock Dekker BV, Netherlands = More information = Type: Rough terrain crane Make of engine: Cummins Number of owners: 1 EPA Marked: yes Front tyres / undercarriage remaining: 80 Rear tyres remaining : 80 Delivery terms: EXW Production country: US Min boom length: 1260 cm