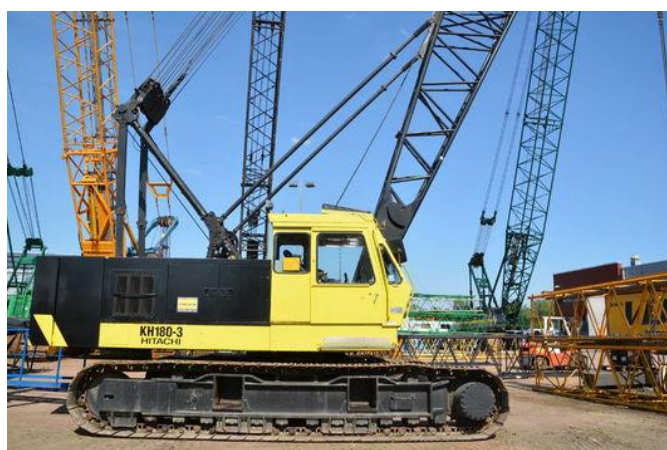




Hitachi KH 180-3

General features

Brand	Hitachi
Subcategory	Telescopic crawler
Construction year	1992
Operating hours	6599
Condition	Used
General condition	Very good



Characteristics

Empty weight	50kg
--------------	------

Lifting height	3.700cm
Mast type	Telescope

Hitachi KH 180-3

Technical specifications

Drive

tracking

Description

= Additional options and accessories = - Hook blocks = Remarks = Hitachi KH180-3 Year: 1992 Hours: 6599 Lifting computer
Hookblock 37 meter boom Price Euro. 77.500,- = More information = Make of engine: Hino Delivery terms: EXW Production
country: JP

Accessories