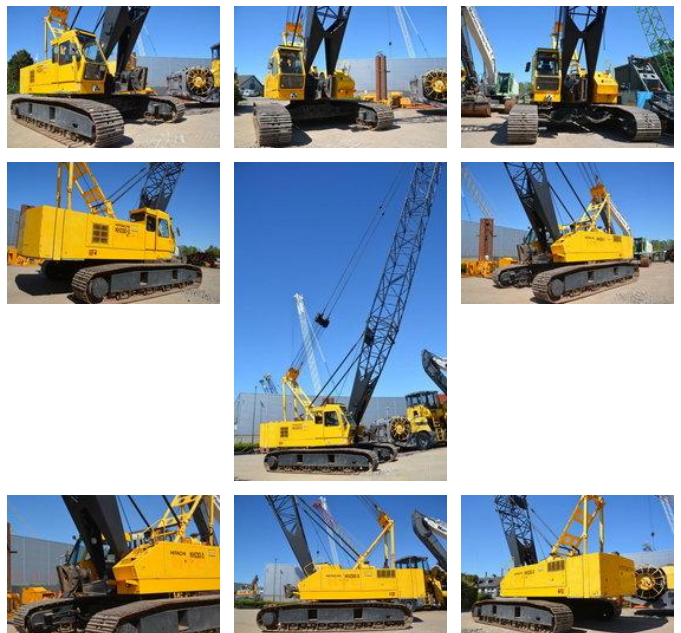




## Hitachi KH 230-3

### General features

Brand	Hitachi
Subcategory	Crawler crane
Construction year	1998
Operating hours	9858
Condition	Used
General condition	Very good
CE marking	Yes



### Characteristics

Lifting capacity

62.000kg

# Hitachi KH 230-3

## Technical specifications

Drive

tracking

## Description

= Additional options and accessories = - Hook blocks = Remarks = Hitachi KH230-3 Year: 1998 Hours: 9858 ORIGINAL HOURS 43 meter boom Fairlead for dragline use (never used) Lifting computer Winches with free-fall option Hino EM100 engine All manuals and even the original toolbox included Undercariage 70% good, tractor type First owner low hour machine in immaculate condition. CE Price: Euro 89.000,- = More information = Make of engine: Hino Number of owners: 1 Delivery terms: EXW Production country: JP Min boom length: 1300 cm

## Accessories