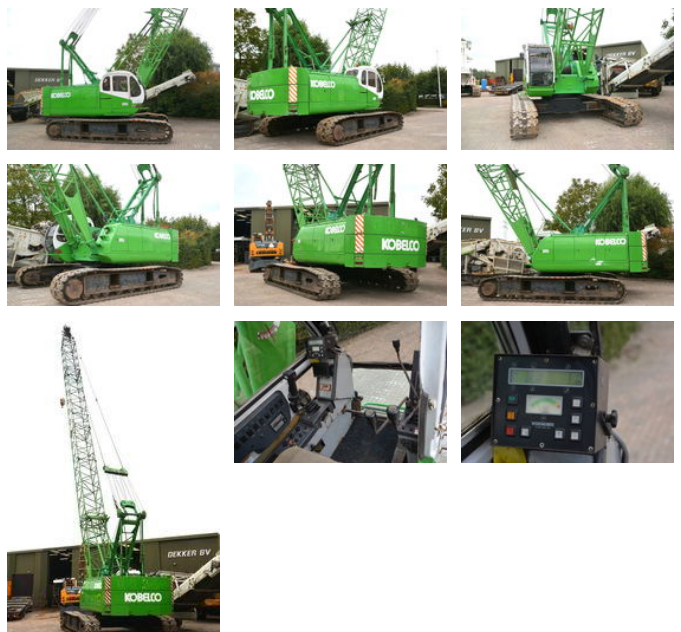




Kobelco BM 500

General features

Brand	Kobelco
Subcategory	Crawler crane
Construction year	1998
Operating hours	8137
Color	Green
Condition	Used
General condition	Very good



Characteristics

Lifting capacity	50.000kg
Lifting height	4.200cm
Mast type	mastType.lattice

Kobelco BM 500

Technical specifications

Drive tracking

Description

= Additional options and accessories = - Hook blocks = Remarks = Kobelco BM500 Year: 1998 Hours: 8137 42 meter boom 2 hook blocks Mitsubishi 6D16-TE1 engine Winches with free-fall option = More information = Make of engine: Mitsubishi Delivery terms: EXW Production country: JP

Accessories