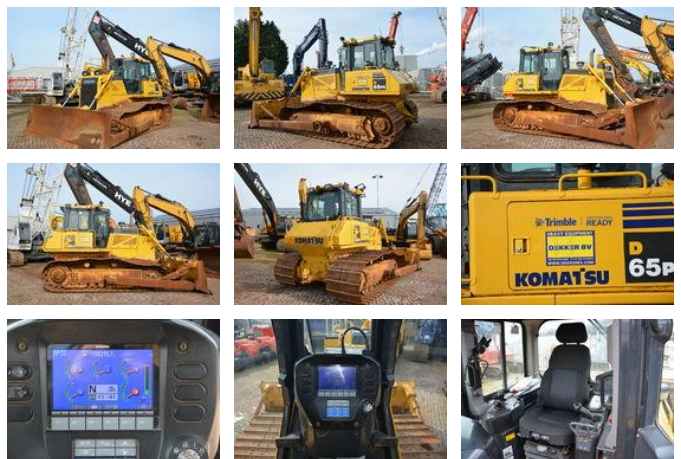




Komatsu D 65 PX-17

General features

Brand	Komatsu
Subcategory	Crawler dozer
Construction year	2015
Operating hours	8390
Condition	Used
General condition	Very good



Characteristics

Empty weight 21.480kg

Komatsu D 65 PX-17

Technical specifications

Drive	tracking
-------	----------

Engine output	223hp
---------------	-------

Description

Komatsu D65PX-17 Year: 2015 Hours: 8390 CE Straights blade with hydraulic tilt Airconditioning Trimble ready 900mm shoes
Price Euro. 69.000,- = More information = Colour: Original Make of engine: Komatsu Number of owners: 1 Tyres / undercarriage remaining: Tracked low ground pressure EPA Marked: yes Delivery terms: EXW

Accessories

- Air conditioning