

DEKKER

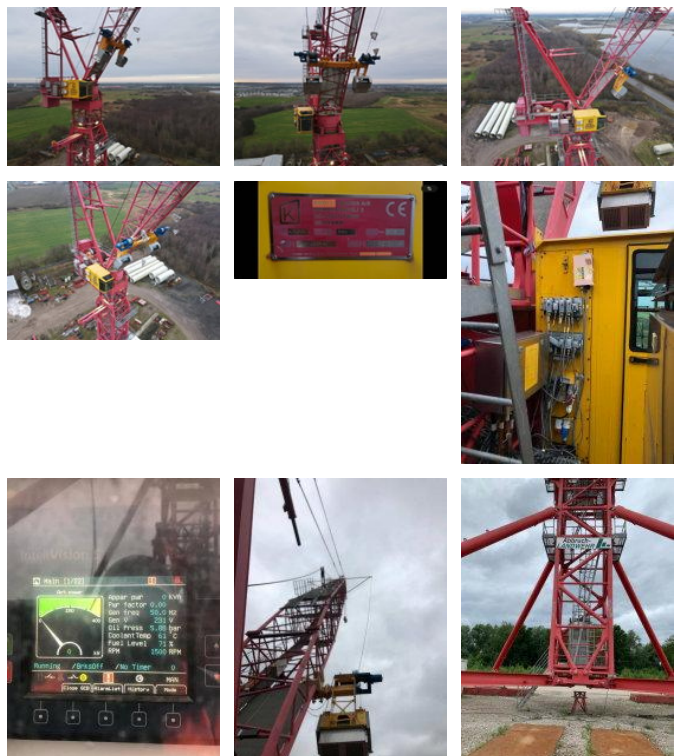
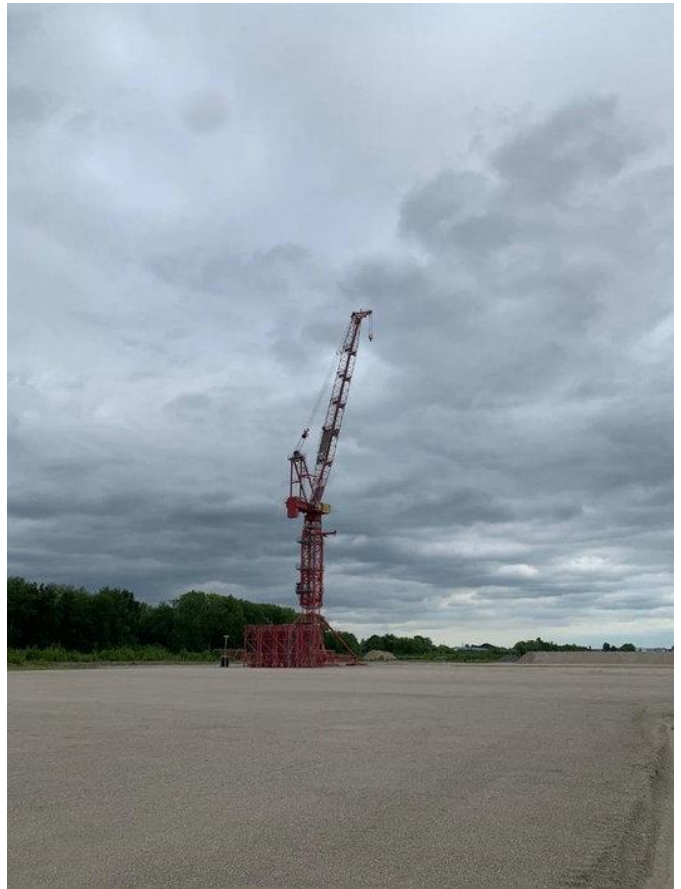
EARTH MOVING EQUIPMENT



Kroll K1500L

General characteristics

Brand	Kroll
Subcategory	Static tower
Year of construction	2015
Operating hours	2500
Condition	Used
General state	Very good
CE marking	And



Properties

Max. lifting capacity

125.000kg

Lifting height

17.900cm

Kroll K1500L

Description

= Additional options and accessories = - Counterweights - Hook blocks = Remarks = Kroll K1500L Towercrane 125 ton capacity
Year: 2015 Hours: 2500 Electric with Generator(in container) CE Self erecting Lift to cabin Max. lifting height : 179 meter Radius:
68.5 meter = More information = Number of owners: 2 Selling price: € 1.750.000 (excl. BTW) Delivery terms: EXW Production
country: DK

Accessories