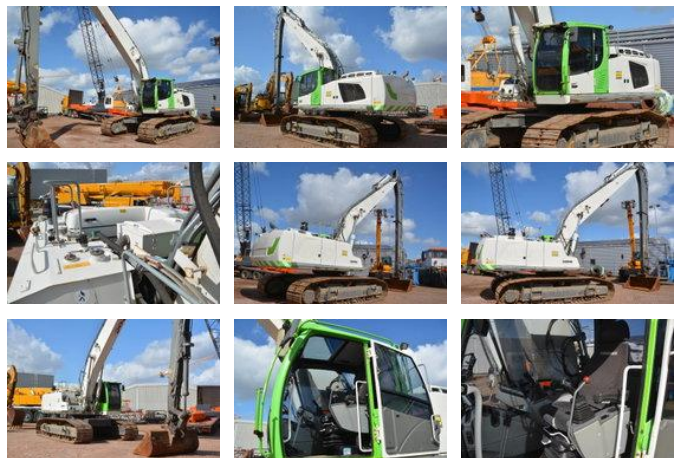




## Liebherr R 946 LC-V Long Reach

### General characteristics

Brand	Liebherr
Subcategory	Telehandler excavator
Year of construction	2015
Operating hours	14912
Colour	Wit
Condition	Used
General state	Very good
Fuel	Diesel
CE marking	And



### Properties

Single weight

51.100kg

# Liebherr R 946 LC-V Long Reach

## Technical specifications

Drive	tracking
-------	----------

---

Assets	272hp
--------	-------

## Description

= Additional options and accessories = - Additional hydraulics - Auto / hydraulic quick coupler - Auto lubrication system - Battery disconnecter - Bucket - Safety line rupture valve - boom/hoist - Safety line rupture valve - dipper/stick - Slope/rotator hydr. circuit =  
Remarks = Liebherr R946LC-V Long-Reach Year: 2015 Hours : 14912 Retractable undercarriage : 3800mm --> 3300mm Boom 10300mm Steel 8500mm Shoes 900mm Automatic greasing Extra hydraulic lines Prepared for GPS Hydraulic quick coupler & bucket CE & EPA Price Euro. 88.500,- = More information = Make of engine: Liebherr D936 Number of owners: 1 EPA Marked: yes Delivery terms: EXW Production country: FR

## Accessories

- Air conditioning