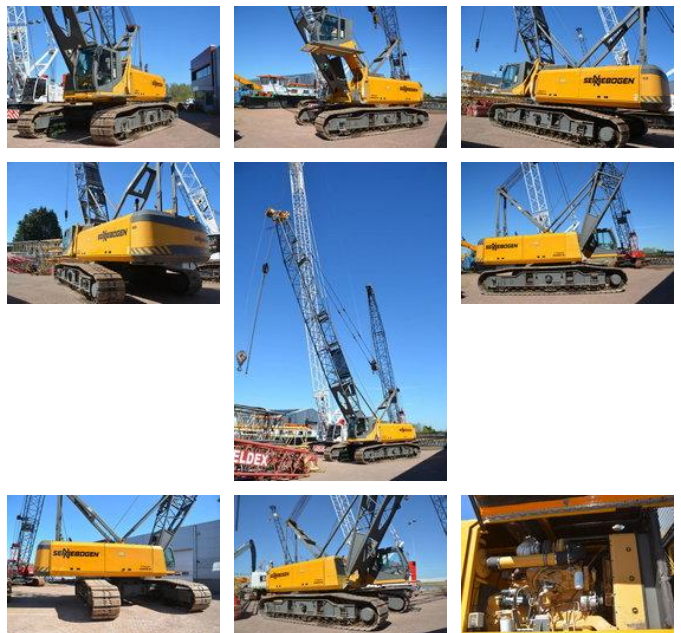




Sennebogen 6100 HD

General features

Brand	Sennebogen
Subcategory	Crawler crane
Construction year	1999
Operating hours	29000
Condition	Used
General condition	Very good
CE marking	Yes



Characteristics

Lifting capacity	100.000kg
Mast type	mastType.lattice

Sennebogen 6100 HD

Technical specifications

Drive

tracking

Description

Sennebogen 6100 HD Year: 1999 Hours: 29000 CE Hydraulic lift cabin Kruger lifting computer Undercarriage 75% good 40 meter boom; upper lower boom + 2X3 + 6 + 2X9 meter From first Dutch owner Caterpillar 3306 engine, 300HP = More information =
Make of engine: Caterpillar Number of owners: 1 Production country: DE

Accessories