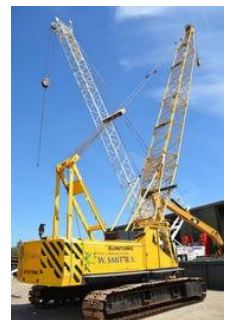




Sumitomo LS118RH

General features

Brand	Sumitomo
Subcategory	Crawler crane
Construction year	1987
Operating hours	8776
Color	Yellow
Condition	Used
General condition	Very good



Characteristics

Empty weight	50.000kg
Lifting height	4.270cm
Mast type	mastType.lattice

Sumitomo LS118RH

Technical specifications

Drive

tracking

Description

= Additional options and accessories = - Hook blocks = Remarks = Sumitomo LS118RH Year : 1987 Hours: 8776 42.7 meter boom
Hookblock & jibball Third winch Lifting computer = More information = Number of owners: 2 Delivery terms: EXW Production
country: JP Min boom length: 1200 cm

Accessories