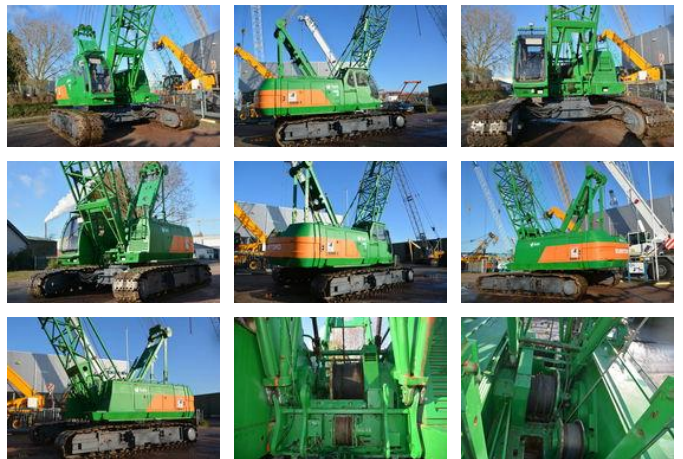
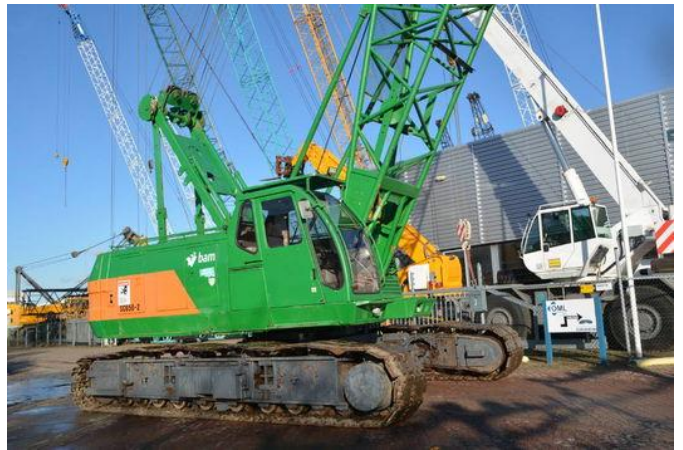




Sumitomo SC 650-2

General features

Brand	Sumitomo
Subcategory	Crawler crane
Construction year	1992
Operating hours	13276
Color	Green
Condition	Used
General condition	Very good



Characteristics

Lifting capacity	65.000kg
Mast type	mastType.lattice

Sumitomo SC 650-2

Technical specifications

Drive

tracking

Description

= Additional options and accessories = - Hook blocks = Remarks = Sumitomo SC650-2 Year: 1992 Hours: 13276 37 meter boom & 12 meter fly jib Hookblock & jibball New lifting computer Crane & Free fall winches 65 tons lifting capacity Hino H07C-TD engine Price Euro. 85.000,- = More information = Make of engine: Hino Delivery terms: EXW Production country: JP Min boom length: 1000 cm

Accessories