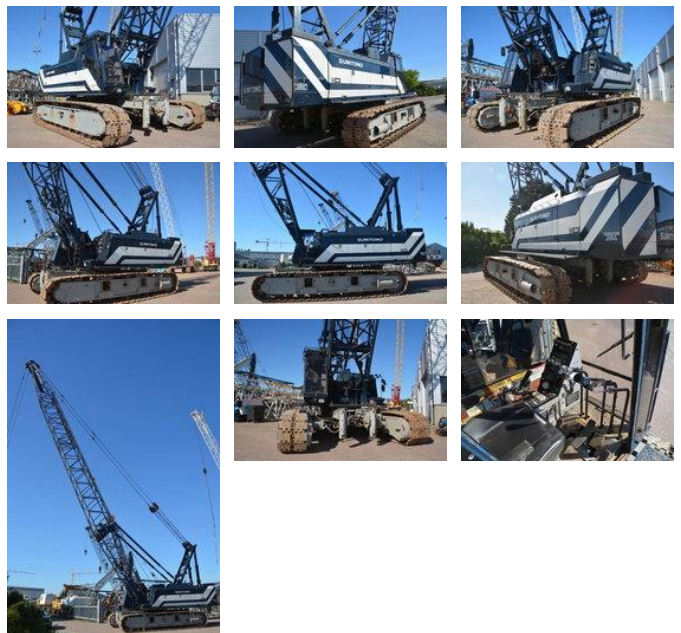




Sumitomo SC 800

General features

Brand	Sumitomo
Subcategory	Crawler crane
Construction year	1996
Operating hours	14000
Color	Blue
Condition	Used
General condition	Very good
CE marking	Yes



Characteristics

Empty weight	80.000kg
Lifting height	5.200cm
Mast type	mastType.lattice

Sumitomo SC 800

Technical specifications

Drive

tracking

Description

Sumitomo SC800 80 tons crawler crane Year: 1996 Hours: 14000 52 meter boom Lifting computer Winches with free-fall option Mitsubishi 6D22CT engine CE Including all manuals and service history Hookblock Undercarriage recently renewed = More information = Make of engine: Mitsubishi Delivery terms: EXW Production country: JP Min boom length: 1500 cm

Accessories