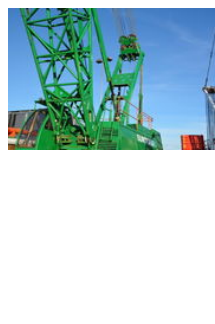




Sumitomo SC1500-2

General features

Brand	Sumitomo
Subcategory	Crawler crane
Construction year	1997
Operating hours	13944
Color	Green
Condition	Used
General condition	Very good
CE marking	Yes



Characteristics

Mast type

mastType.lattice

Sumitomo SC1500-2

Technical specifications

Drive tracking

Description

= Additional options and accessories = - Hook blocks = Remarks = Sumitomo SC1500-2 Year : 1997 Hours: 13916 CE 72 meter boom + 30 meter Fly jib 150 ton + 35 ton hookblock & jibball Live mast Lift computer new in 2024 Winches with free-fall option = More information = Delivery terms: EXW Production country: JP

Accessories